



# MEMBER CONNECTION

September  
2006

P.O. Box 371  
Wabash, Indiana 46992  
Voice: 260-563-1168  
Fax: 260-563-6920

Kimberly Pinkerton, Editor  
Email: [info@wabashchamber.org](mailto:info@wabashchamber.org)  
URL: [www.wabashchamber.org](http://www.wabashchamber.org)

## CHAMBER NAMES ELLIOTT UNSUNG HERO

The Wabash County Chamber of Commerce is please to announce Danny Elliott as the 2007 Unsung Hero. This award was started last year and is given to someone who labors tirelessly for a cause without credit or expectation of anything in return. The award is being presented to his wife Sharon in his memory.

Danny Elliott dedicated a large portion of his life to the youth of Wabash County. He served as a Cub Scout Den Leader, Cubmaster and Boy Scout Leader in the 1980s and watched as his son earned the rank of Eagle Scout. But, his real passion was baseball.

As a young boy, Danny played baseball with his friends on the Southside and as a Little Leaguer at the park. He was the bat boy for the traveling baseball team. As a teenager he played on his church sponsored baseball team and later, as an adult, on the Ford Meter Box softball team.

Danny shared his love of baseball with the young people in Wabash County. He managed T-ball, Coaches Pitch, and American League. He also served as Commissioner for those three leagues and as Little League Board Member, Vice President and President. He had served as president for three years at the time of his death.

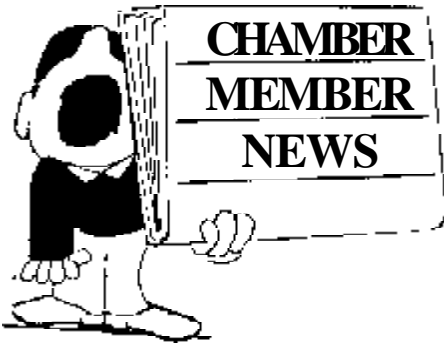
In 1993 he received the Little League Volunteer of the Year Award. In 2006, after his death, the Coaches Pitch diamond was named the "Danny Elliott Memorial Field." The plaque was designed and made at Ford Meter Box.

Danny was born in 1947 to Bill and Julia Elliott at Wabash County Hospital. He had one sister, Ginny Ball. He married Sharon Sutter, May 1971 in Roann. She is a register nurse at American Health Network. They have two children, Brian and Allison and three grandsons Jordan, Treavor, and Clayton.

Danny graduated from Wabash High School in 1965, served 4 years in the Navy and worked at Ford Meter Box for almost 40 years in the Copper Department. He was a member of the Church of Our Savior United Methodist Church and had served as a trustee. He was the Administrative Council Chairperson at the time of his death.



*Sharon Elliott, second from left, accepts award for her husband Danny Elliott from Chamber President Kim Pinkerton and Committee Members Mayor Bob Vanlandinham, and Skip Daughtry*



Please route this newsletter to the other staff in your business to keep them up-to-date on services, functions and programs available to all employees of our member companies!

HAVE YOU HAD CHANGES OR IMPROVEMENTS IN YOUR BUSINESS? HAVE YOU RECEIVED AN AWARD, REACHED A MILESTONE, OR COMPLETED ADDITIONAL TRAINING? WE WANT TO KNOW. SHARE THESE THINGS WITH YOUR CHAMBER PARTNERS. THEY TOO ENJOY HEARING. CALL, FAX, E-MAIL, OR MAIL NOTES TO THE CHAMBER OFFICE.

**Ponderosa** Manager Jacob Gaylor, invites you to try their breakfast buffet on Saturdays and Sundays from 8 a.m. until 11 a.m. Cost is only \$5.99. Ponderosa is located at 1319 N. Cass St, Wabash.

**Workforce Development Strategies, Inc.** (WDSI) recently elected their new board of directors. Ruth Person, Chancellor, Indiana University Kokomo, will chair the Board through 2006-2007. The new board affirmed WDSI's purpose of bringing together economic development, education and business to discover solutions that lead to a better workforce and stronger economy.

Upon completion of a successful two-month beta test, Mike Shira of **Wabash Electric Information Technology Services** announced the release of Store-IT Online, Back-up, Storage & Recovery Services. They look forward to offering their clients this "best of breed" technology solution to protect critical data. For more information email [it@wabashelectric.com](mailto:it@wabashelectric.com), or call 260.563.2240 or 800.850.3084.

**Ivy Tech** is once again offering Food Safety Certification. Indiana Code 410-IAC7-22 requires mandatory certification of at least one person who oversees the food safety operation within each establishment. Ivy Tech offers an instructor-led certification training at a non-refundable cost of \$105. Contact is Jan Hulet at 765.459.0561, ext. 528 or Doug Clark, ext. 530.

From the **Honeywell Center**:

Sept. 9 – Indianapolis Symphony Orchestra – 6:30 p.m.

Sept. 16 – Kid-O-Rama 10 a.m. – 2 p.m. and Jungle Jack Hanna – 7:30 p.m.

Sept. 24 – Summit City chorus – 2:00 p.m.

Oct. 6-8 – Beauty & the Beast

Call the box office at 260.563.1102 or buy tickets online anytime (no fees) at [www.honeywellcenter.org](http://www.honeywellcenter.org)

**Clark Gallery Exhibits:**

8/24 – 9/18 – Richard Jackson followed by Peru High School Sept. 21 – Oct. 15

Remember fine dining at **Eugenia's Restaurant** – serving lunch M-F, 11 a.m. to 2 p.m. and Sunday Brunch from 11 a.m. – 2 p.m. Buffet dining is also available with most theater performances.

Remember to use your **Member-to-Member Discount Card**. This card offers discounts at 15 member businesses: A-Z Discount Tobacco, Asian Buffet, Daywalt Pharmacy, Dorais Chevrolet, Frances Slocum Bank, GoodFellas Pizza, Kirtlan Automotive, Lovebug Floral Boutique, Modoc's, Midwest Eye Consultants, Portraits by Kimberly, Sunshine Pack & Ship, The Wabash Gardens, The Works, Wells Fargo Bank. The card is available for all member business employees. If you need additional cards at your business please call the Chamber office, 563-1168.

## Welcome New Members

**Toni Folzenlogel**, 8908 Torrance Place, Fishers, IN 46038. Telephone: 317-450-3456 E-mail: [tfolzenbogel@yahoo.com](mailto:tfolzenbogel@yahoo.com). Toni is the Graphic Artist/Designer who designed the new Chamber logo.

**Providence Communications**, 3233 South Lafayette Street, Fort Wayne, IN 46806. Telephone: 260-420-5415 Fax: 260-969-0018 E-mail: [jeffhalley@comcast.net](mailto:jeffhalley@comcast.net). Contact: Jeff Halley or Richard Cummins. They do custom publishing and printing.

**A & R Indiana LLC**, 11963 Mayfield Avenue #103, Los Angeles, CA 90049. Telephone: 310-826-7728 Fax: 310-826-7268 E-mail: [aarongolchet@yahoo.com](mailto:aarongolchet@yahoo.com) Contact: Aaron Golchet. They have a mixed retail and office building as well as 1.6 acres of land which they would like to develop in Wabash.

**William Konyha**, 214 South Wabash Street, Wabash, IN 46992. Telephone: 260-563-5258 E-mail: [wkonyha@edgwc.com](mailto:wkonyha@edgwc.com) Mr. Konyha has joined the Chamber as an individual member. He is the President of Economic Development Group of Wabash County.

## WARM GREETINGS AT CHAMBER/EDG OPEN HOUSE

Smiles, wows, and laughter were abundant at the August 18 Building Open House. We thank the many members who came to welcome us in our spacious, new location. Visitors mingled with staff and took advantage of the opportunity to meet the new director of EDG of Wabash County, Bill Konyha. Over 70 business and civic representatives toured the facility and enjoyed sampling the aromatic hors d'oeuvres, while conversations abounded. Our appreciation to John Miller (**Miller Furniture**) and Mary DeLaughter (**The "D" Shoppe**) for their decorating assistance and staff members Beth Miller and Warren Unsicker for all their preparations. We sincerely thank **Billings Flowers & Gifts**, **Frances Slocum Bank**, and the **Love Bug** for the beautiful floral arrangements and **Market Street Grill** and **Bowman's Candy** for the tasty treats.

## DON'T FORGET

Ballots for election of four persons to the Chamber Board for three year terms were recently sent out to all members. Don't forget to return them by September 5.

## 14<sup>th</sup> ANNUAL DAY OF HEALING

The Wabash Friends Counseling Center will be holding their 14<sup>th</sup> Annual *Day of Dealing: A Personal Growth Conference*, featuring the renowned Dr. John Townsend as the keynote speaker. This year's event will occur October 28, at the Honeywell Center, 275 W. Market St., Wabash.

Dr. Townsend is the co-author of the award-winning "Boundaries" and "Boundaries in Marriage." A dynamic communicator who is entertaining, thought provoking, and immeasurably practical as well as a prolific writer, Dr. Townsend will be joined by 20 professional counselors and educators leading 30 different workshops in the morning and afternoon. Topics include: overcoming the effects of your past, self-esteem, making marriage work, bi-polar kids and adults, communication, handling overwhelming emotions, anger management, leadership principles, anxiety and guilt reduction, grief, life's transitions, and weight loss for life.

Registration is \$15 through October 8, and \$25 thereafter. A scholarship fund is available through the Wabash Friends Counseling Center for those who are unable to pay the registration fee. For more information or to register, telephone 260-563.8452 or 877.350.1658; email [scott@wabashfriends.org](mailto:scott@wabashfriends.org); or visit [wabashfriendscounseling.com](http://wabashfriendscounseling.com).

## CHAMBER ANNUAL DINNER SPEAKER ANNOUNCED



Committee Chair Larry Hoover is pleased to announce this year's Annual Dinner Speaker will be Billy Riggs, CSP, known as **The Attitude Dude**, America's source for all things attitude! Through television, radio, books, videos, his helpful website ([www.theattitudedude.com](http://www.theattitudedude.com)) and live keynote speeches Billy Riggs has used an unusual blend of comedy, music, magic, and



motivation to spread his positive attitude to more than a million people on five continents. A spellbinding communicator, Mr. Riggs honed his uplifting message and speaking skills in the pulpit, founding one of America's fastest-growing churches at the age of 29. Though his presentations now are secular, audiences sometimes sense the old preacher in him, stirred by his sincerity and power on the platform. In 2002, Mr. Riggs was presented the highest earned award of the National Speakers Association: the **Certified Speaking Professional**. Since 1995, he has breathed the magic of attitude into people, companies and organizations. But the goose bumps aren't always the result of dramatic oratory. When Billy Riggs appears, things on stage begin to disappear! Using magical illusions to drive home his points, The Attitude Dude has transformed hundreds of otherwise ordinary conferences into something truly special. His quick wit and quicker hands spread laughter and raise morale as listeners learn to reshape their destinies with a wave of life's magic wand: attitude!

This year's Annual Dinner will be held on October 19 at 6:30 p.m. in the Honeywell Center. In addition to the passing of the gavel and acknowledgment of board members and volunteers, we will honor the City of Wabash as the 2006 Business of the Year and announce the Distinguished Citizen. Invitations will be mailed and reservations begin August 25. The public is invited to attend

This year's event is being sponsored by the following businesses: Comcast, GDX, C.A.T. Excavating, Duke Energy, First Federal Savings Bank, Wabash Valley Refuse, Wells Fargo Bank, NIPSCO, and Bruce Carter & Associates.

---

### Business Before Hours

The next Business Before Hours will be October 11, 7:00 a.m. at the Honeywell Center



Business Sponsors are Community Connections, Huntington University Excel Program, Ivy Tech Community College, Wabash/MSD Schools, and Wabash Engraving. The emcee will be Susan Mattern of The Body Connection.

Please mark your calendars now to attend.

# Are We Really Embracing Development?

By Kimberly Pinkerton, President

As I begin my second year as your Chamber President, I allowed myself some reflection time about the state of Wabash. Unemployment is lower, industry is up, downtown revitalization has begun in Wabash, and growth is coming along U.S. 24. We have existing business putting up new buildings, industries wanting to upgrade equipment, move new lines here, some have expansion projects going on – this is all good news we should celebrate.

Which is why I'm a little perplexed. When some business owners/citizens have been approached to support such projects and growth, we see various reactions. "Well, how are my customers going to come into my store...I'm not contributing anything until I see it truly completed...what a joke...or, let's rezone this parcel or that parcel so company xyz can't build there..." Aren't these the same people that have called the City, Chamber or Economic Development Group demanding we do something to improve the local economy?

I'm proud to be part of a very strong network of individuals working to grow the community through research, collaboration, and action. City/county governmental units, utilities, local civic organizations, educational institution and public/private representatives attend meetings to work to make our community even better. I enjoy being warmly welcomed into local retail, professional, service, and industrial businesses to discuss what's happening in your business, to ascertain what, if any, your needs are, listening to concerns, and being able to take that information back to the meetings to brainstorm ideas for improvement or find resources to help you succeed.

Research conducted by the Massachusetts Institute of Technology and the Brookings Institution show that 40-60 percent of job growth comes from the expansion of small businesses. Your Chamber and Economic Development Group are here to assist you. We can guide you through the maze by providing strategies, guidance, links to the resources you may need and to be a voice for you. Your Chamber offers free business counseling through their partnership with the Small Business Development Center, as well as professional development seminars. From Customer Service to Business Plans, we have tools to assist you. Take advantage of your investment in these organizations. Together we grow stronger.

# COMMITTEE NEWS

## PUBLIC RELATIONS

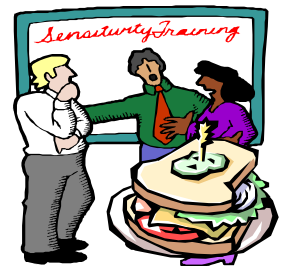
The Business Before Hours event continues to be an extremely popular venue for networking, introducing new executives and employees to the area, and showcasing your company's business. We are now booking business sponsors into February 2007, with only two opening left for that month. We will soon be mailing a reservation form to past sponsors who want to reserve their 2007 dates in advance. We thank Committee Chair Andy Eads (The Plain Dealer), and committee members Toni Benysh (First Federal Savings Bank), Kathy Bakehorn (ARC of Wabash County), Ann Harting (Honeywell Center), and Trula Frank (Wabash County Convention and Visitor's Bureau) for their efforts in making this one of the Chamber's most successful ongoing programs. If your business is interested in becoming a sponsor, call the office or email [info@wabashchamber.org](mailto:info@wabashchamber.org).

## MEMBERSHIP

The Chamber thanks Committee Chair Lynne Schafer and all the committee heads and board members who participated in the recent New Member Welcome Luncheon. The event is an effort to help acquaint new members with Chamber programs, leadership and structure, and how to get the most from their investment in the organization. Participants enjoyed a delicious lunch from recent Chamber member Market Street Grill with sweet treats from Bowman's Candy. We look forward to offering an evening event for those who could not attend a luncheon time frame.

## SEMINAR

We have recently launched the 2006-2007 Lunch & Learn Series. We thank the presenters and sponsors who worked with the committee on developing this lunch-hour professional development series. The first of the series will be September 14 presented by Lori Eltzroth, Vice President of Human Resources at Beacon Credit Union. The topic is "The Trend Toward Consumer Driven Healthcare in the Workplace" and is sponsored by Skip Daughtry, Beauchamp & McSpadden. For a complete listing of seminars and sponsors or to register online, visit our website [www.wabashchamber.org](http://www.wabashchamber.org).



## BOARD MEMBERS

2005-2006

Douglas Lehman, Chair  
Douglas C. Lehman, PC  
Ron Kerby, Chair Elect  
Frances Slocum Bank  
Andy Eads, Vice Chair  
The Plain Dealer  
Chris Webb, Treasurer  
Alfe Heat Treating, Inc.  
David Rutledge, Past Chair  
Wells Fargo Bank  
Kimberly Pinkerton, President  
Wabash County Chamber  
of Commerce

Robert Pearson  
Wabash County REMC  
Tina Byerly  
Beacon Credit Union  
Howard Halderman  
Halderman Farm Management  
John Andersen  
Ford Meter Box Co., Inc.  
Jim Reynolds  
Reynolds Oil  
Larry Hoover  
Quality Electric  
Kathy Jones  
First Farmers Bank & Trust  
Trisha Metzger  
First Federal Savings Bank  
Celia Briggs  
Wabash City Schools  
Greg Metz  
Metz Title

## Calendar



|                        |            |                               |
|------------------------|------------|-------------------------------|
| September 7-10         |            | Roann Covered Bridge Festival |
| September 14           | 12:00 p.m. | Lunch & Learn Seminar         |
| September 15-17        |            | Plein Air Painters            |
| September 16           |            | CSI Wabash                    |
| September 16-17        |            | Museum Grand Opening          |
| September 16-17        |            | Paradise Arts Festival        |
| September 30-October 1 |            | Wabash Home Tour              |
| October 11             | 7:00 a.m.  | Business Before Hours         |

# Gold Members

Thank and salute those member businesses who carry **GOLD LEVEL** status:

**Beacon Credit Union**  
**Pettit Printing, Inc.**  
**First Federal Savings Bank**  
**Richard Ford**  
**Bulldog Battery**  
**Wells Fargo Bank**  
**Miller's Merry Manor**  
**Frances Slocum Bank**  
**Ford Meter Box Co., Inc.**  
**First Farmers Bank & Trust**  
**Kirtlan Automotive Machine & Repair, Inc.**  
**Physician's Health Plan of Northern Indiana, Inc.**  
**K & R Office Supply, Inc.**

Any Wabash County Chamber Member can elevate their membership status to Gold Level by investing an additional \$500 above their regular membership investment. In addition to having their company acknowledged at Chamber events and in publications, Gold Level Members receive \$100 in Chamber Bucks and receive a free large rotating banner ad on the Chamber website.



**P.O. Box 371**  
**Wabash, IN 46992**

Please notify us of any changes on address label

Presort Std.  
U.S. Postage  
PAID  
Wabash, IN  
46992  
Permit No. 228

# Lunch & Learn Seminar Series

## 2006-2007

Thursday, September 14, 2006

### THE TREND TOWARD CONSUMER DRIVEN HEALTHCARE IN THE WORKPLACE

Lori Eltzroth, Vice President Human Resources, Beacon Credit Union

*Sponsor: Beauchamp & McSpadden, Inc.*

This session will lead employees, managers and even CEOs to meet the challenge of health insurance by discussing High Deductible Health Plans, Health Savings Accounts (HSAs), Health Reimbursement Accounts (HRAs) and teaching you, the consumer, how to work with healthcare providers for deeper discounts...no matter what kind of coverage you have.

Thursday, November 9, 2006

### TIPS AND TRICKS FOR FULLY UTILIZING MICROSOFT OUTLOOK CALENDAR

Anita Wildman, Quality and Training Officer, Beacon Credit Union

*Sponsor: Beacon Credit Union*

For those with Microsoft Outlook Calendar, learn to automate and organize your world (both personally and professionally) by mastering the art of appointment scheduling, prioritizing and setting other calendar options.

Thursday, January 11, 2007

### REDUCING EMPLOYEE TURNOVER

Dr. Todd Voss, Vice President Student Development, Indiana Wesleyan University

*Sponsor: Ford Meter Box Company, Inc.*

Dr. Voss will detail the philosophy of building teamwork and successful business results by using character as a determinant for "getting the right people on the bus."

Thursday, March 8, 2007

### LEGAL ISSUES IN THE WORKFORCE

Steve Downs, Attorney at Law, Tiede Metz & Downs

*Sponsor: EDG (Economic Development Group) of Wabash County*

With this topic, local attorney, Steve Downs, will discuss legal pitfalls within the workplace that business owners, senior management, mid-line managers and even employees can and should avoid.

Thursday, May 10, 2007

### CONTINUING EDUCATION FOR TODAY'S MANAGERS

Admissions Counselor from Huntington University's Excel Program

*Sponsor: First Farmers Bank & Trust*

Learn about available programs, curriculum design, and flexibility for the adult learner and many other reasons to consider the pursuit of higher education for yourself or your employees.



The "Lunch & Learn" Seminar Series is designed to be a cost-effective form of employee development. We provide the lunch and speakers that allow your employees to develop their skills.

- \*COST EFFECTIVE
- \*INFORMATIVE
- \*EFFICIENT
- \* VALUABLE
- \*TIMELY

### GREAT LOCATION!

All seminars are held in the  
**CHAMBER OF  
COMMERCE  
CONFERENCE ROOM**  
(210 S. Wabash St., Wabash, IN)  
2nd Floor of City Hall  
Noon until 1 PM

**LUNCH PROVIDED!**

Please register me for the "Lunch & Learn" Seminar Series.

Names: \_\_\_\_\_

\_\_\_\_\_

Company: \_\_\_\_\_

**Number Attending:**

Sessions \$10 each - member rate  
(\$20 non-member rate)

Series \$50 - member rate  
(\$100 non-member rate)

Please indicate which session (s) you wish to attend by marking the appropriate number (s):

1 2 3 4 5

Payment is enclosed for: \$ \_\_\_\_\_

Check# \_\_\_\_\_

(checks payable to Wabash Co. Chamber of Commerce)

Bill Me  (Add \$1 invoicing fee)

**Credit Card Information:**

Visa  AmExp

Discover  M/Card

Account# \_\_\_\_\_

Exp. Date: \_\_\_\_\_

Signature: \_\_\_\_\_

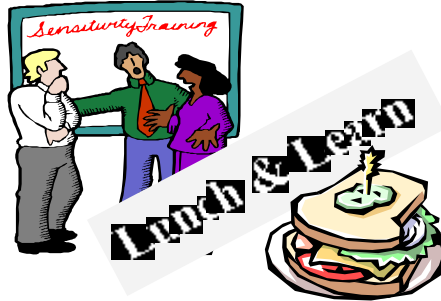
**Return to:** Wabash County  
Chamber of Commerce

P.O. Box 371  
Wabash, IN 46992  
Tel. 260-563-1168  
[info@wabashchamber.org](mailto:info@wabashchamber.org)

The Wabash County Chamber of Commerce  
thanks the

**Seminar Committee Members:**

- Lori Eltzroth Chair (Beacon Credit Union)
- Rex Stitsworth (Ford Meter Box Company)
- Melissa Rekeweg (First Federal Savings Bank)
- Pat Lynn (Youth Service Bureau)



The "Lunch & Learn" Seminar Series is made possible in part by the support of these Gold Level Chamber Members:

- Beacon Credit Union
- Pettit Printing, Inc.
- First Federal Savings Bank
- Richard Ford
- Bulldog Battery
- Wells Fargo Bank
- Miller's Merry Manor
- Frances Slocum Bank
- Ford Meter Box Company, Inc.
- First Farmers Bank & Trust
- Kirtlan Automotive Machine & Repair, Inc.
- Physician's Health Plan of Northern Indiana, Inc.
- K & R Office Supply



presents



2006-2007